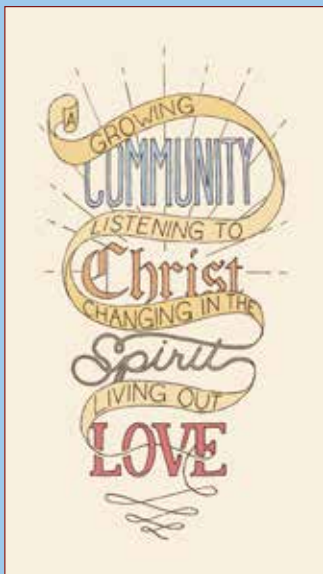


# Your NFC

a weekly newsletter for the people of the Newberg Friends Church community

May 19, 2017



## 89 Days!

**Have you heard** of the “The cell rule of Optina”? It’s a reading structure that guides you through the New Testament in 89 days: three chapters per day, one from the Gospels and two from the other books starting in Acts. On Day 1 you read Matthew 1 and Acts 1 and 2, and 89 days later the last chapter of John’s Gospel is read on the very same day as Revelation 21 and 22.

Did you ever reread a book and discover details you’d missed the first time through. That’s what often happens when rereading scripture. Depending on where your focus lies at the time, different words and passages jump off the page. Maybe at the end of 89 days you’d choose to start again to see what other messages God places on your heart.

Why not start today or tomorrow? Use the guide below or [CLICK HERE](#) to find it online. Use your own Bible or [choose a version here](#).

Daily Reading Plan to Study the New Testament				www.89days.net			
Date	Day	Gospel	New Testament	Date	Day	Gospel	New Testament
	Day 1	Matthew 1	Acts 1-2		Day 46	Luke 2	Colossians 1-2
	Day 2	Matthew 2	Acts 3-4		Day 47	Luke 3	Colossians 3-4
	Day 3	Matthew 3	Acts 5-6		Day 48	Luke 4	I Thessalonians 1-2
	Day 4	Matthew 4	Acts 7-8		Day 49	Luke 5	I Thessalonians 3-4
	Day 5	Matthew 5	Acts 9-10		Day 50	Luke 6	I Thessalonians 5
	Day 6	Matthew 6	Acts 11-12		Day 51	Luke 7	II Thessalonians 1-2
	Day 7	Matthew 7	Acts 13-14		Day 52	Luke 8	II Thessalonians 3
	Day 8	Matthew 8	Acts 15-16		Day 53	Luke 9	I Timothy 1-2
	Day 9	Matthew 9	Acts 17-18		Day 54	Luke 10	I Timothy 3-4
	Day 10	Matthew 10	Acts 19-20		Day 55	Luke 11	I Timothy 5-6
	Day 11	Matthew 11	Acts 21-22		Day 56	Luke 12	II Timothy 1-2
	Day 12	Matthew 12	Acts 23-24		Day 57	Luke 13	II Timothy 3-4
	Day 13	Matthew 13	Acts 25-26		Day 58	Luke 14	Titus 1-2
	Day 14	Matthew 14	Acts 27-28		Day 59	Luke 15	Titus 3, Philemon
	Day 15	Matthew 15	Romans 1-2		Day 60	Luke 16	Hebrews 1-2
	Day 16	Matthew 16	Romans 3-4		Day 61	Luke 17	Hebrews 3-4
	Day 17	Matthew 17	Romans 5-6		Day 62	Luke 18	Hebrews 5-6
	Day 18	Matthew 18	Romans 7-8		Day 63	Luke 19	Hebrews 7-8
	Day 19	Matthew 19	Romans 9-10		Day 64	Luke 20	Hebrews 9-10
	Day 20	Matthew 20	Romans 11-12		Day 65	Luke 21	Hebrews 11-12
	Day 21	Matthew 21	Romans 13-14		Day 66	Luke 22	Hebrews 13
	Day 22	Matthew 22	Romans 15-16		Day 67	Luke 23	James 1-2
	Day 23	Matthew 23	I Corinthians 1-2		Day 68	Luke 24	James 3-4
	Day 24	Matthew 24	I Corinthians 3-4		Day 69	John 1	James 5
	Day 25	Matthew 25	I Corinthians 5-6		Day 70	John 2	I Peter 1-2
	Day 26	Matthew 26	I Corinthians 7-8		Day 71	John 3	I Peter 3-4
	Day 27	Matthew 27	I Corinthians 9-10		Day 72	John 4	I Peter 5
	Day 28	Matthew 28	I Corinthians 11-12		Day 73	John 5	II Peter 1-2
	Day 29	Mark 1	I Corinthians 13-14		Day 74	John 6	II Peter 3-4
	Day 30	Mark 2	I Corinthians 15-16		Day 75	John 7	I John 1-2
	Day 31	Mark 3	II Corinthians 1-2		Day 76	John 8	I John 3-4
	Day 32	Mark 4	II Corinthians 3-4		Day 77	John 9	I John 5, II John
	Day 33	Mark 5	II Corinthians 5-6		Day 78	John 10	III John, Jude
	Day 34	Mark 6	II Corinthians 7-8		Day 79	John 11	Revelation 1-2
	Day 35	Mark 7	II Corinthians 9-10		Day 80	John 12	Revelation 3-4
	Day 36	Mark 8	II Corinthians 11-12		Day 81	John 13	Revelation 5-6
	Day 37	Mark 9	II Corinthians 13		Day 82	John 14	Revelation 7-8
	Day 38	Mark 10	Galatians 1-2		Day 83	John 15	Revelation 9-10
	Day 39	Mark 11	Galatians 3-4		Day 84	John 16	Revelation 11-12
	Day 40	Mark 12	Galatians 5-6		Day 85	John 17	Revelation 13-14
	Day 41	Mark 13	Ephesians 1-2		Day 86	John 18	Revelation 15-16
	Day 42	Mark 14	Ephesians 3-4		Day 87	John 19	Revelation 17-18
	Day 43	Mark 15	Ephesians 5-6		Day 88	John 20	Revelation 19-20
	Day 44	Mark 16	Philippians 1-2		Day 89	John 21	Revelation 21-22
	Day 45	Luke 1	Philippians 3-4				

This plan is in the public domain.



**Pastoral Team**

Michelle Akins  
children and family ministries

Steve Fawver  
spiritual health and care

Gregg Koskela  
lead pastor

Elizabeth Sherwood  
administration

Nolan Staples  
worship ministries

**Support Staff**

Corbin Gronvold  
youth ministries coordinator

Denise Lyman  
bookkeeper/receptionist

Sherry Macy  
admin assist / communications

Arnie Mitchell  
buildings manager

Dan Ritter  
buildings manager

Mark Thompson  
cemetery sexton



Newberg Friends Church  
307 S College Street  
P.O. Box 487 (mailing)  
Newberg, Oregon 97132  
503-538-8381

[www.newbergfriends.org](http://www.newbergfriends.org)

Please direct  
all publications items  
to Sherry Macy.

**READ AHEAD FOR SUNDAY**

**John 14:15-22**

**What's Ahead**

**SUNDAY**

**9am** | Sunday school for children and adults — for times and classroom information, find "Educational Opportunities" at each entrance, each "Info Center," at the welcome center, or ask a greeter to help you.

**9am** | worship gathering

**10-10:45am** | Community Time | in the social hall and library

**10:15-10:45am** | library staffed

**10:30am** | Agape Sunday school class

**10:45am** | worship gathering

**6pm** | Senior Salute | social hall | celebrating high school seniors

**Monday, May 22**

Intercessory prayer | 9am | Barclay C

Strong For Life | 10:30am | Barclay B

Margaret Fell WMF potluck | 6pm | NFC social hall | featured speaker: Stuart Willcuts | men are invited and encouraged to attend

Call to Prayer | 6:30pm | Room 236

**Wednesday, May 24**

Strong For Life | 10:30am | Barclay B

Middle school youth group | 6:00pm | Friends Center

WBFpm | 7pm | Barclay C

High school youth group | 7:30pm | Friends Center

**Thursday, May 25**

Women's Bible Fellowship | 8:45am | social hall

3:4-5 Fun Night | 6-8pm | FC gym | dinner, games, and a mission presentation for children in 3rd-5th grade

**Friday, May 26**

Strong For Life | 10:30am | Barclay B

**Saturday, May 27**

Eilene Williams memorial service | 2pm | NFC sanctuary

**Plan Ahead**

May 29 | NFC office closed for Memorial Day holiday

June 4 | Taizé gathering | 6pm | NFC sanctuary

June 5 | JOY breakfast | 8am | Friendsview Hess Creek dining room | \$4 | for seniors 55 and older

June 10 | wood ministry work session | 9-11:30am | Friends Cemetery on Everest Rd | contact Larry Hampton, 503-538-6508

June 11 | business meeting | 6pm | NFC sanctuary

[Click here to see the calendar online.](#)

## ☛ Heaven's Gain



**Eilene Williams** died on May 16, 2017, at age 101 (only three weeks from 102). She had been a member since 1966. Family members at NFC include her husband, **Keith Williams**. A memorial service will be held on Saturday, May 27, at 2 p.m.



## Summer Sunday School Programming

Beginning June 4 our Sunday school programming will change to the summer schedule.

Nursery offered both services  
Pre-K Sunday school, 9 a.m., Room 124  
K-5th Sunday school, 9 a.m., Room 121

No Godly Play or  
Children's Care at 10:45 a.m.

Volunteers who want to help with nursery or Sunday school are asked to let Michelle Akins know your availability by going to **THIS SITE**.



It's time to sign up for summer camp at Twin Rocks Friends Camp! Brochures are available at the welcome center or [on their website](#).

**Girls Camp: July 2-7**

**Boys Camp: July 16-21**

**Tween Camp: July 9-15**

**Surfside Camp: August 6-12**

**Family Camp: September 1-4**

## YCEW RWANDA

JUNE 25-JULY 13, 2017

A short-term summer mission trip for youth and adults of all ages of Northwest Yearly Meeting



Rachel Sherwood  
Newberg Friends



Bailey Sherwood  
Newberg Friends



Barb Mann  
Newberg Friends



Katia Reid  
Sherwood Friends



Tim Burdick  
North Seattle Friends



Gwen Thomas  
Newberg Friends



Maryanna Haines  
Caldwell Friends



Arianna Kern  
Newberg Friends



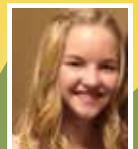
Aubrey Koskela  
Newberg Friends



David Thomas  
Newberg Friends



Chris Flores  
Caldwell Friends



Alandra Thomas  
Newberg Friends

To donate, click **HERE**.



## Cemetery Volunteer Work Day

Tomorrow morning, May 20  
9am - noon  
Friends Cemetery  
Come help mow, whack weeds,  
or help with other projects  
Contact Elizabeth @ 503-537-8800



PLEASE JOIN US FOR A

# graduation celebration

SENIOR SALUTE  
Dessert, Worship, Slide Show, Speaker

An annual celebration of our graduating seniors.  
Feel free to invite family and close friends.

Sunday, May 21  
6:00 pm - 8:00 pm  
Newberg Friends Church Social Hall

## Margaret Fell Friends Women invites you to a **Potluck Dinner**



May 22, 2017 • 6 to 8 p.m.  
NFC social hall

**Men welcome and encouraged to attend!**

**Bring: salad, main dish, or dessert  
(beverages and table service provided)**

**Speaker: Stu Willcuts  
Ministry: Air Serve**

**To read the current  
issue of NWYM Connection  
click on image —>**



College Scholarships for undergraduates will be available for those who consider NFC their church home and who attend Friends colleges or universities such as George Fox. Find an application at the welcome center, pick one up from the church office during the week, or download it from [this link](#). Return your completed application by June 15. We ask that students reapply each year for this scholarship.